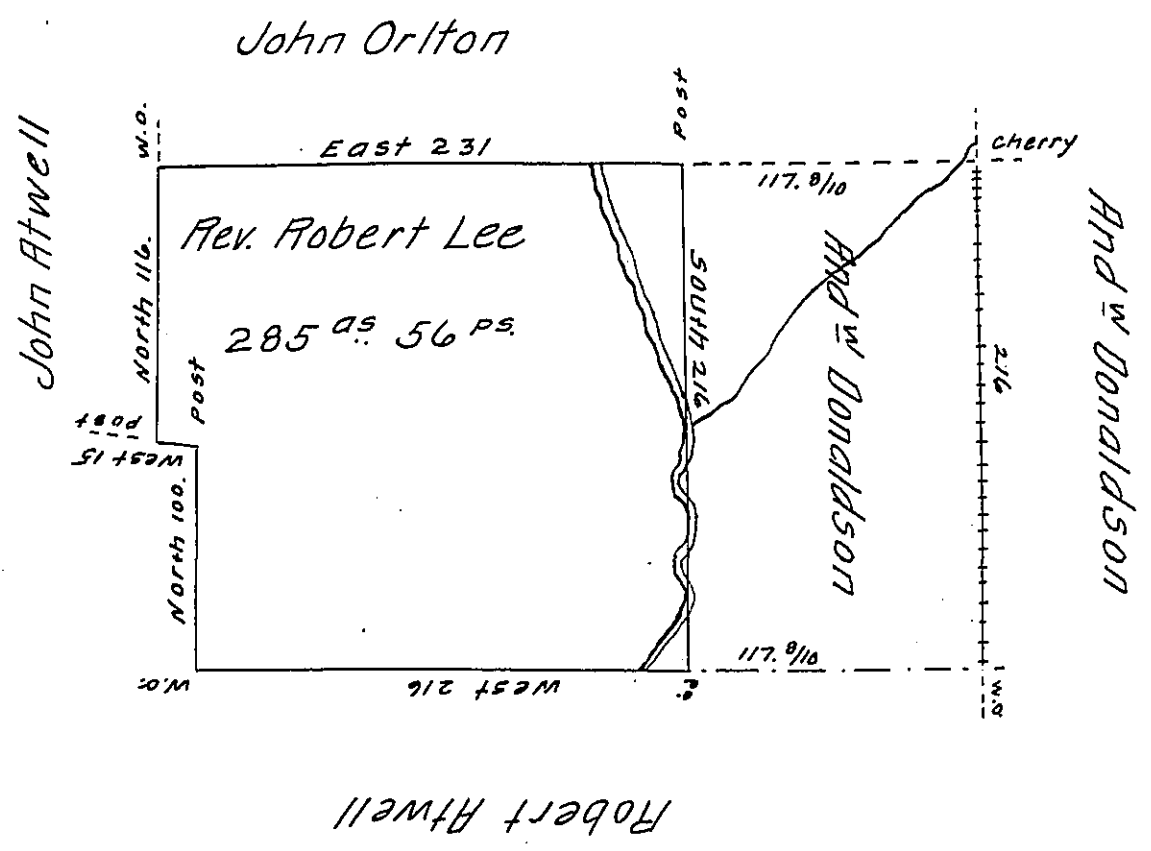


C. 156 15W



A Draft of a tract of land Containing two hundred and eighty five acres and fifty Six perches &c. within the black lines, and that in dotted (a part of the same tract) divided off to Andw. Donaldson in Mercer Township on the waters of Slippery rock creek. Surveyed November 23<sup>rd</sup> 1820 in pursuance of the Improvement and Residence of the Rev. Robert Lee.

To Jacob Spangler Esq<sup>r</sup> } Barnet Gilleland D. S.  
 Sur<sup>r</sup>. Gen!

IN TESTIMONY that the above is a copy of the original remaining on file in the Department of Internal Affairs of Pennsylvania, made conformably to an Act of Assembly approved the 16th day of February, 1833, I have hereunto set my Hand and caused the Seal of said Department to be affixed at Harrisburg, this nineteenth day of August 1907.

Henry Howick  
 Secretary of Internal Affairs.